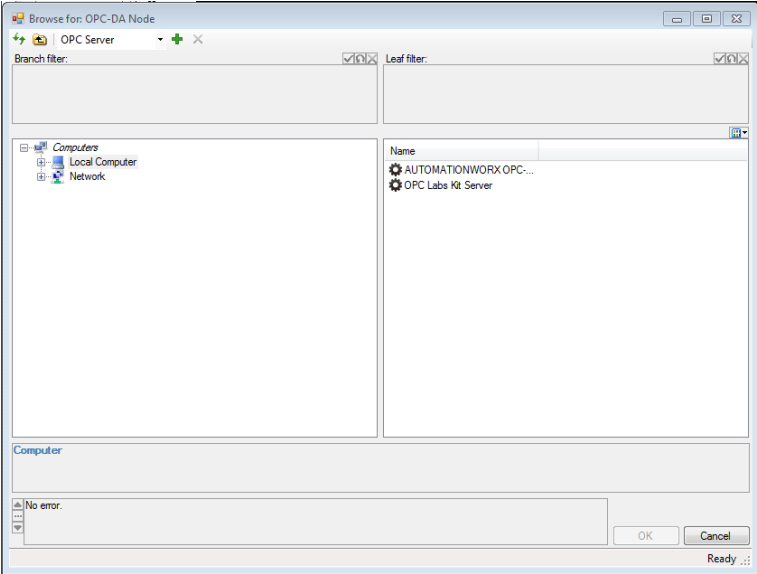
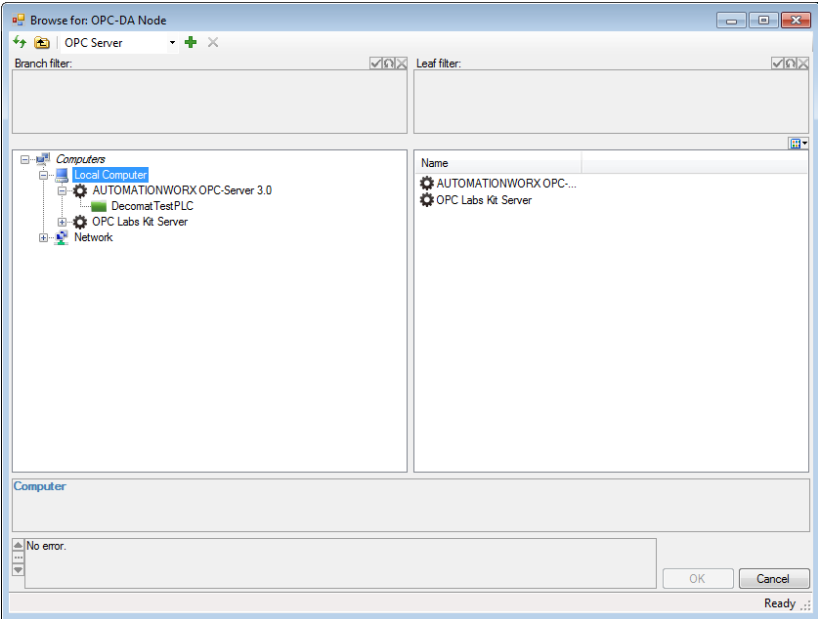


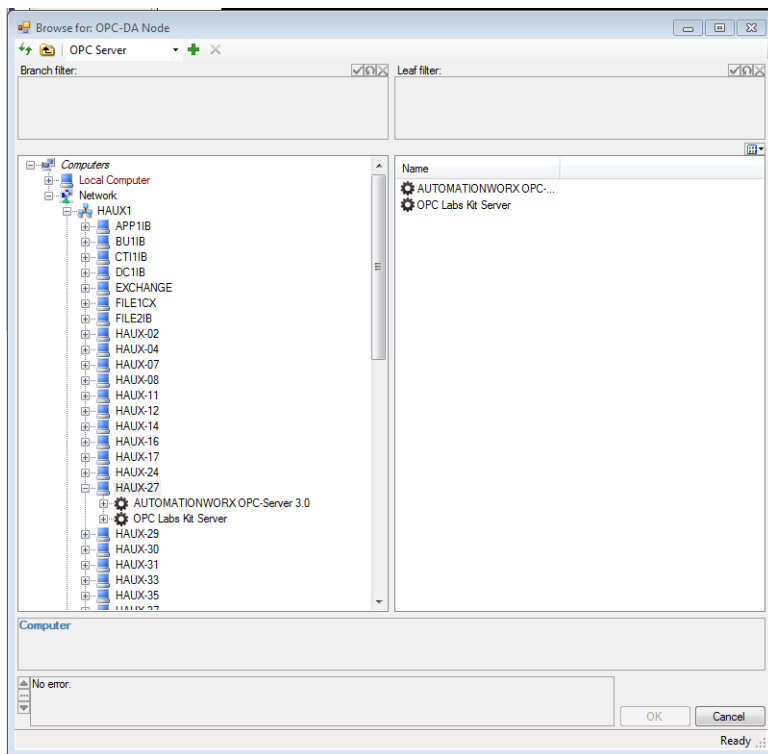
Local OPC servers, here are showed correctly (Local Machine is Haux-115)



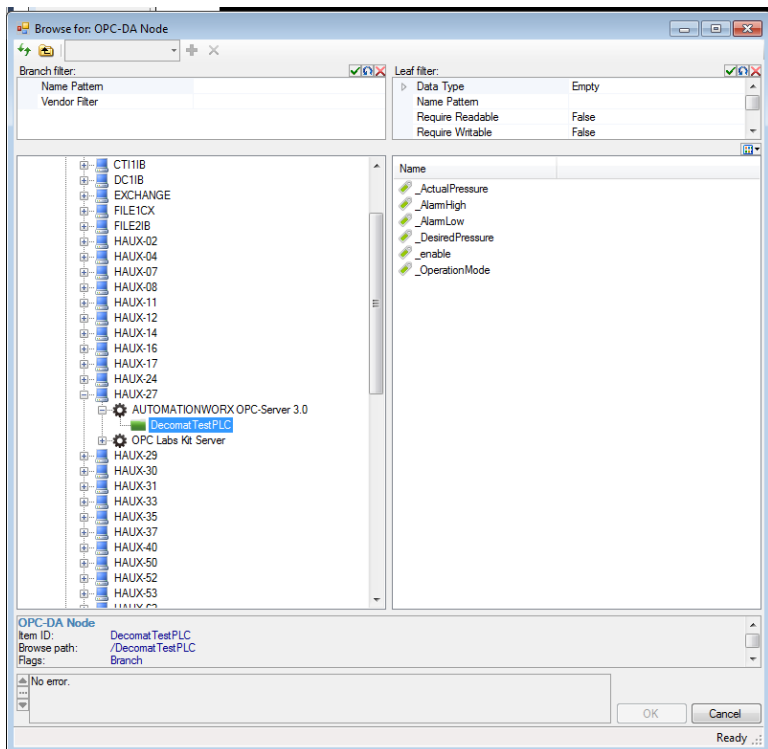
The Local OPC server shows correctly the OPC Nodes



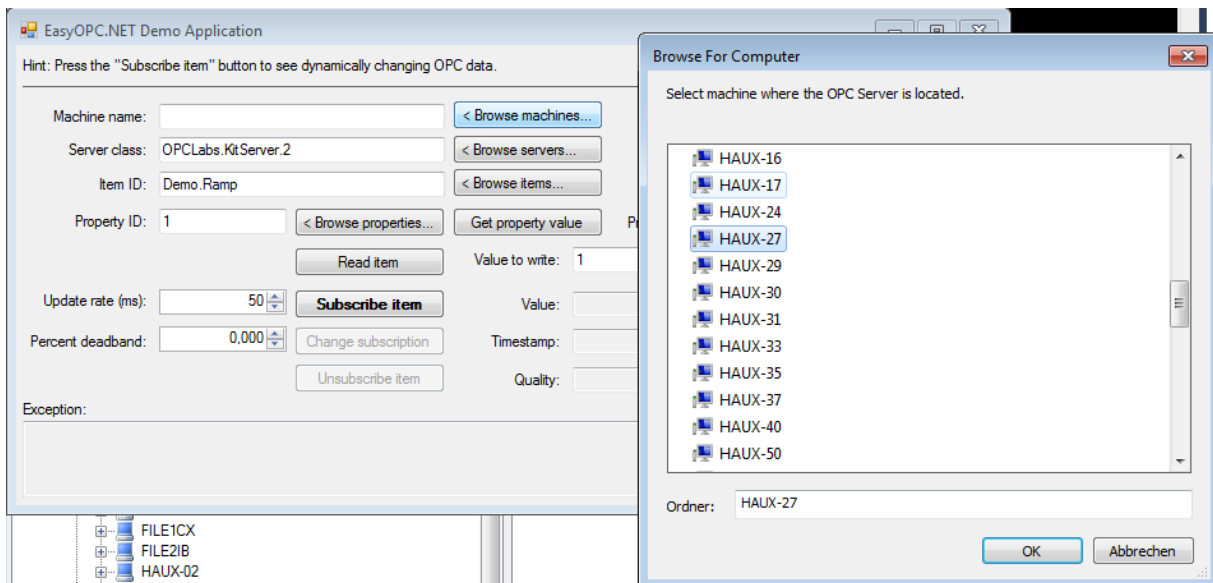
Searching the OPC servers in remote Machine (Haux-27)



Remote machine shows the OPC servers from Local Machine and also the OPC Nodes from the Local Machine



Searching the OPC servers using the DEMO App in remote machine



OPC servers are showed correctly in this form, remote machine has 3 servers installed

